

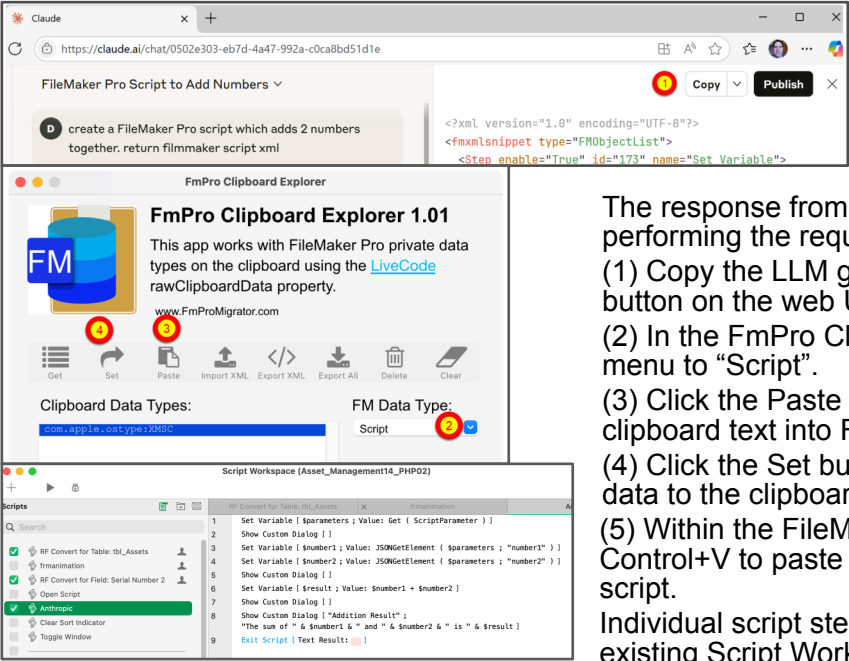


## Top 10 Features

- www.FmProMigrator.com

FileMaker Clipboard Data Types Reference		
macOS	Windows	Object Type
XML2	Mac-XML2	Layout
XMFN	Mac-XMFN	Custom Function
XMTB	Mac-XMTB	Table
XMFD	Mac-XMFD	Field
XMSC	Mac-XMSC	Script
XMSS	Mac-XMSS	Script Step
XMVL	Mac-XMVL	Value List

Copying LLM Generated Scripts into FileMaker



Copying LLM generated scripts into FileMaker is as simple as a quick copy/paste.

The prompt shown here, (even though mis-spelled!) is requesting “FileMaker script XML” as a result.

The response from the LLM is a properly structured XML script performing the requested task.

(1) Copy the LLM generated XML to the clipboard with the Copy button on the web UI. The clipboard contents will be UTF8 text.

(2) In the FmPro Clipboard Explorer, set the FM Data Type menu to “Script”.

(3) Click the Paste button or Command/Control+V to copy this clipboard text into FmPro Clipboard Explorer.

(4) Click the Set button or Command/Control+C to copy this data to the clipboard as a FileMaker script.

(5) Within the FileMaker Script Workspace, Use Command/Control+V to paste the script into the Script Workspace a new script.

Individual script steps can also be copied and pasted within existing Script Workspace scripts.

Drag & Drop FileMaker XML Files

XML files containing the <fmxmlsnippet> key are recognized as FileMaker objects by FmPro Clipboard Explorer. These files can be copied from FileMaker, exported, edited by external software and pasted back into FileMaker as the correct data type for the object they represent.

Alternatively, XML files can be generated entirely by other software, written into .XML files enclosed by the <fmxmlsnippet></fmxmlsnippety> key which will be recognized as valid files for importing into FmPro Clipboard Explorer and made available for pasting into FileMaker.

